

AIS Tel : +213 (0)23 97 85 47
NOF Tel : +213 (0)21 65 63 65
AFTN : DAAAYNYX
<http://www.sia-enna.dz>
 algerian.ais@sia-enna.dz

People's Democratic Republic of Algeria
 National Establishment of the Air Navigation Direction of
 the Exploitation of the Air Navigation Department of
 Aeronautical Information
 Route de Cherarba BP 70D- Dar El Beida Alger- Algérie

AIP SUP
08/23

PUBLICATION
07 AUG 23

SUBJECT: IN SALAH (DAUI) – RWY 05/23 new physical characteristics and new apron and TWYs.

Valid from: 07 AUG 23

End of validity: UFN.

CNL AIP SUP: AIP SUP 07/23.

CNL NOTAM(s): NIL.

Following the end of reinforcement works on the RWY 05/23 of IN SALAH aerodrome, the RWY 05/23 physical characteristics have been updated.

the magnetic variation has been changed to 1° 11' E changing by 0° 7' E per year.

The information and data contained in this AIP SUP replace the information published in the AIP Algeria.

1. Aerodrome information (see aerodrome chart).

Magnetic variation: 1°E (2023).

2. RWY 05/23 physical characteristics (see aerodrome chart).

<i>Designations RWY NR</i>	<i>TRUE BRG</i>	<i>Dimensions of RWY (M)</i>	<i>Strength (PCN) and surface of RWY and SWY</i>	<i>THR coordinates RWY end coordinates THR geoid undulation</i>	<i>THR elevation and highest elevation of TDZ of precision APP RWY (M)</i>
05	051°	3000 x 45	PCN 65 /F/D/W/T Bituminous Concrete	271432,30 N 0023000,23 E	THR: 270 TDZ: NIL
23	231°			271533,66 N 0023125,02 E	THR: 264 TDZ: NIL

<i>Designations RWY NR</i>	<i>SLOP OF RWY- SWY</i>	<i>SWY Dimensions (M)</i>	<i>CWY Dimensions (M)</i>	<i>Strips Dimensions (M)</i>	<i>RESA Dimensions (M)</i>	<i>Remarks</i>
05	RWY :0,46% SWY : NIL	100M x 45M	NIL	3200 x 140	100 x 90	RWY shoulders: 07,5 M
23	RWY :0,06% SWY : NIL	100M x 45M	NIL		100 x 90	RWY shoulders: 07,5 M

3. RWY 05/23 Declared distances

RWY	TORA(M)	TODA(M)	ASDA(M)	LDA(M)
05	3000	3000	3100	3000
23	3000	3000	3100	3000

4. APRONS, Taxiways:

APRON ID	Dimensions	ACFT STANDS	Strength Surface
NEW APRON	200M x 88,5M	(06) Six ACFT stands : CAT C / B738	77 /F/D/W/T Bituminous Concrete

TWY ID	Width (M)	Strength	Surface	Remarks
A	25	76 /F/D/W/T	Bituminous Concrete	TWYs shoulders: 09,5 M
B				

5. Charts:

- AD2-DAUI - AD.
- AD2-DAUI – IAC1.
- AD2-DAUI – IAC2.
- AD2-DAUI – IAC3.
- AD2-DAUI – IAC4.
- AD2-DAUI – VAC1.

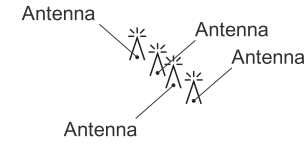
27°15'N

2°30'E

27°16'N

2°31'E

Runway	Direction (Magnetic)	Threshold	Bearing Strength
05	050°	271432,30 N 0023000,23 E	PCN 65 /F/D/W/T Bituminous concrete
23	230°	271533,66 N 0023125,02 E	PCN 65 /F/D/W/T Bituminous concrete

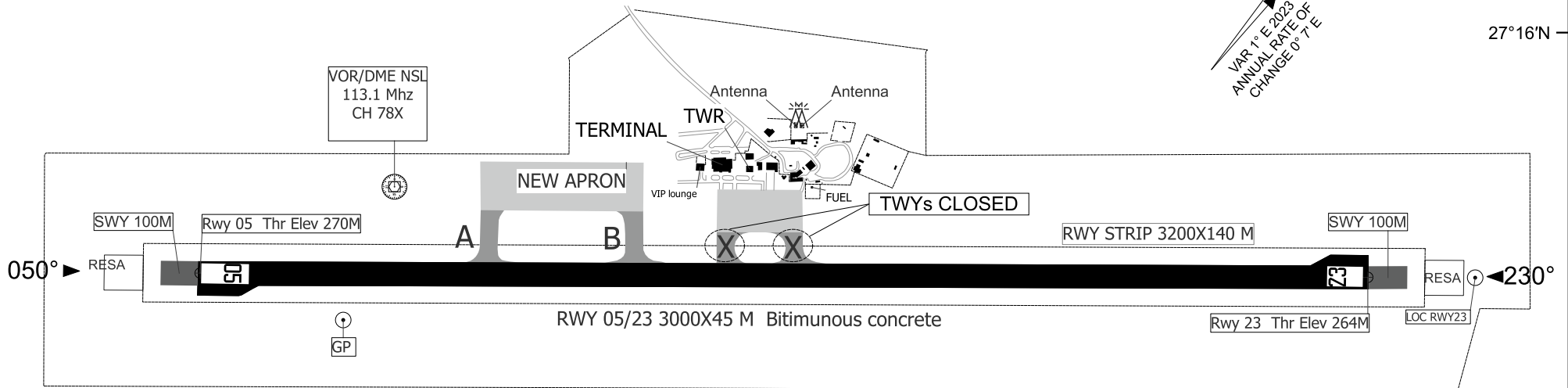


ELEVATIONS AND DIMENSIONS IN METRES
BEARINGS ARE MAGNETIC

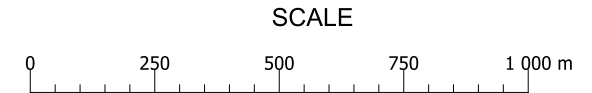


APRON AND TAXIWAYS : BLUE LIGHTS

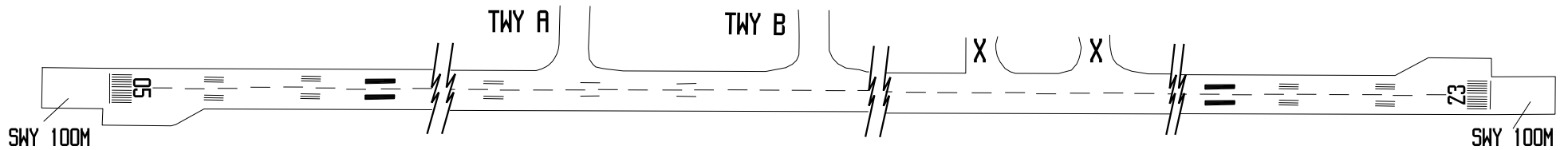
TAXIWAYS 25 M WIDE .



ID	TWY	TAXIWAYS WIDTH & STRENGTH
X		CLOSED
X		CLOSED
A		25M 76 /F/D/W/T Bituminous Concrete
B		25M 76 /F/D/W/T Bituminous Concrete



MARKING / LIGHTING AIDS RWY 05/23



INSTRUMENT
APPROACH
CHART - ICAO

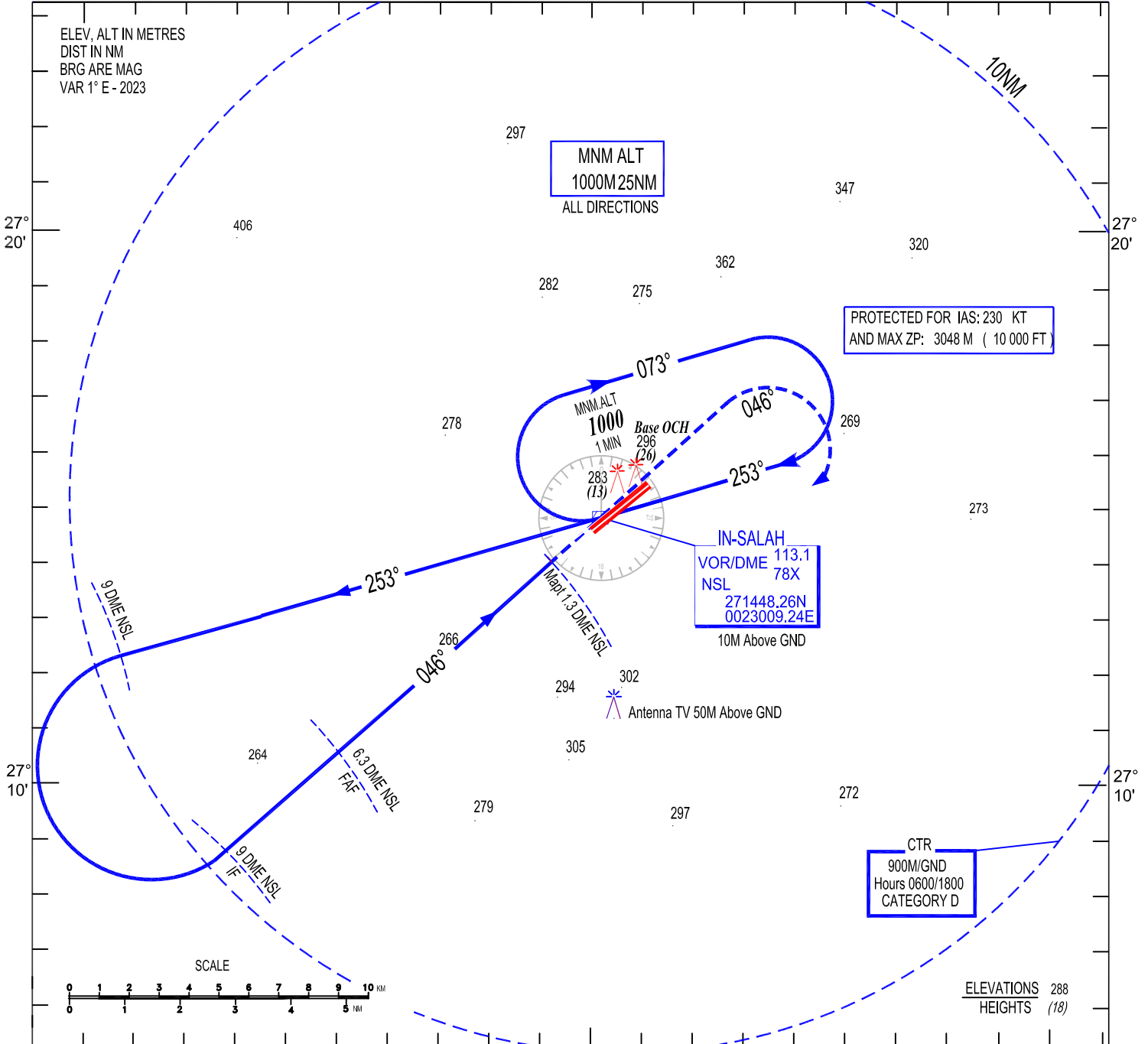
AERODROME ELEV 270 m
HEIGHTS RELATED TO
AD ELEV

TWR: 118.1, 119.7(s)

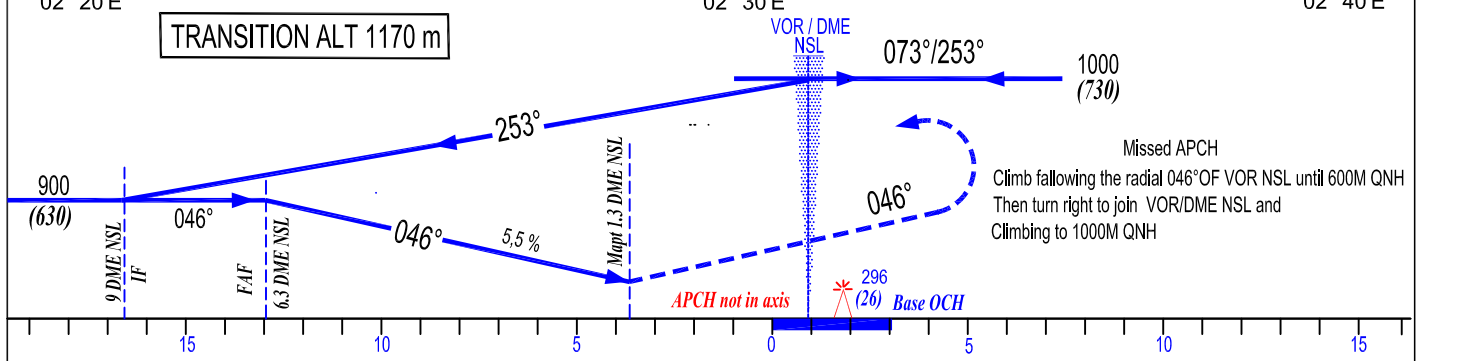
VOR/DME RWY 05
CAT C / D

02° 20'E 02° 30'E 02° 40'E

ELEV, ALT IN METRES
DIST IN NM
BRG ARE MAG
VAR 1° E - 2023



TRANSITION ALT 1170 m



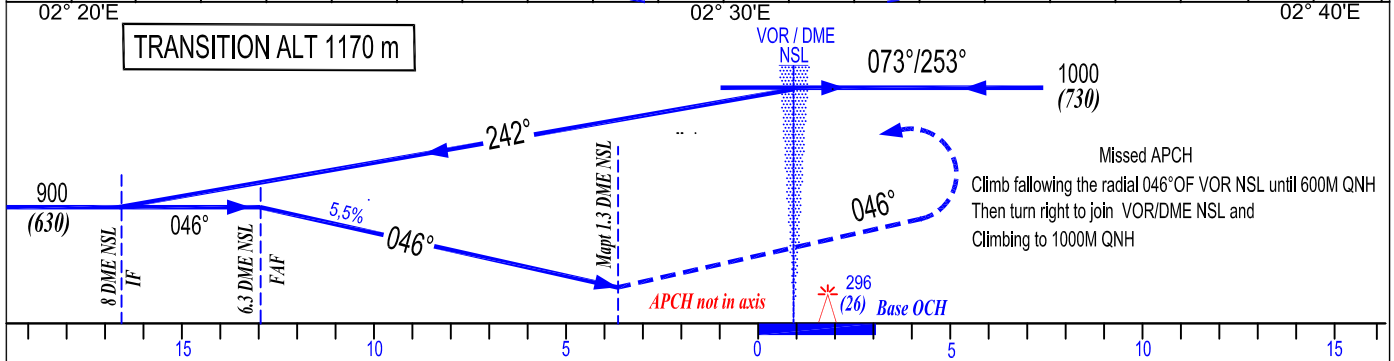
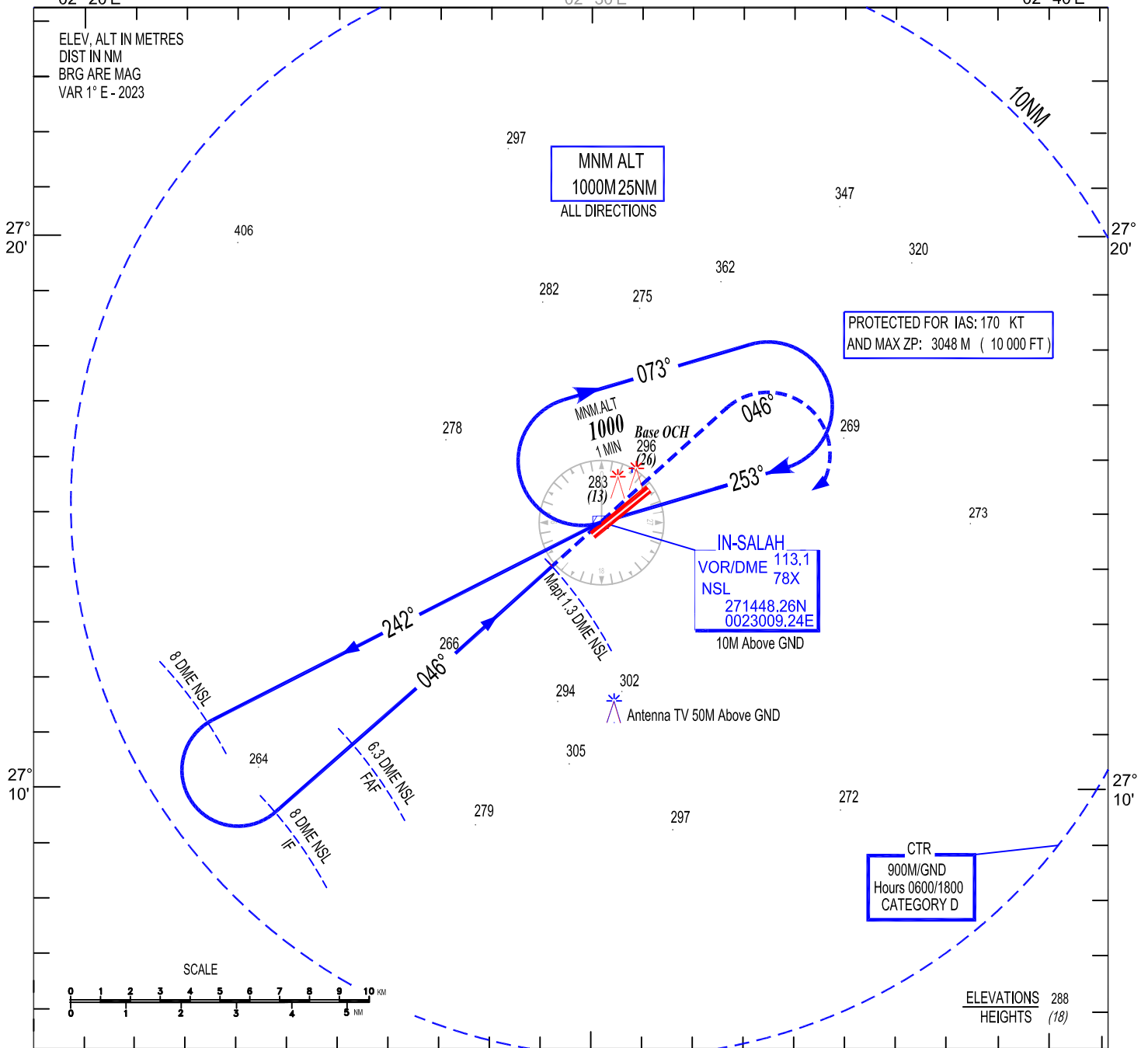
Cat/ACFT	LOWEST ADMISSIBLES OPERATIONNAL MINIMUMS					
	VOR/DME- RWY 05			Circling		
	OCH	MDH	VH	OCH	MDH	VH
C	130 M	430 FT	2800 M	210 M	690 FT	4000 M
D	130 M	430 FT	3200 M	210 M	690 FT	4400 M

INSTRUMENT
APPROACH
CHART - ICAO
02° 20'E

AERODROME ELEV 270 m
HEIGHTS RELATED TO
AD ELEV

TWR : 118.1, 119.7(s)

VOR/DME RWY 05
CAT A / B



Cat-ACFT	LOWEST ADMISSIBLES OPERATIONNAL MINIMUMS					
	VOR/DME- RWY 05			Circling		
	OCH	MDH	VH	OCH	MDH	VH
A	130 M	430 FT	2400 M	170 M	560 FT	2400 M
B	130 M	430 FT	2400 M	170 M	560 FT	2400 M