

**AIS Tel** : +213 (0)23 97 85 47  
**NOF Tel** : +213 (0)21 65 63 65  
**AFTN** : DAAAYNYX  
<http://www.sia-enna.dz>  
[algerian.ais@sia-enna.dz](mailto:algerian.ais@sia-enna.dz)

**People's Democratic Republic of Algeria**  
National Establishment of the Air Navigation Direction of  
the Exploitation of the Air Navigation Department of  
Aeronautical Information  
Route de Cherarba BP 70D- Dar El Beida Alger- Algérie

**AIP SUP**  
**05/24**

**PUBLICATION**  
**30 MAY 24**

**SUBJECT: In Guezzam (DATG) – Publication of the NDB RWY 08 approach procedure for In Guezzam aerodrome.**

**Valid from: 13 JUN 2024.**

**End of validity: 11 JUL 2024.**

**CNL AIP SUP: 04/24.**

**CNL NOTAM(s): NIL.**

**THIS SUPPLEMENT CANCEL AND REPLACE AIP SUP 04/24**

**1. General:**

**New Approach procedure NDB RWY 08 for In Guezzam aerodrome.**

**2. CHARTS:**

- Page 2 : IAC - ICAO NDB RWY08 CAT A/B -----AD 2 DATG-IAC 2

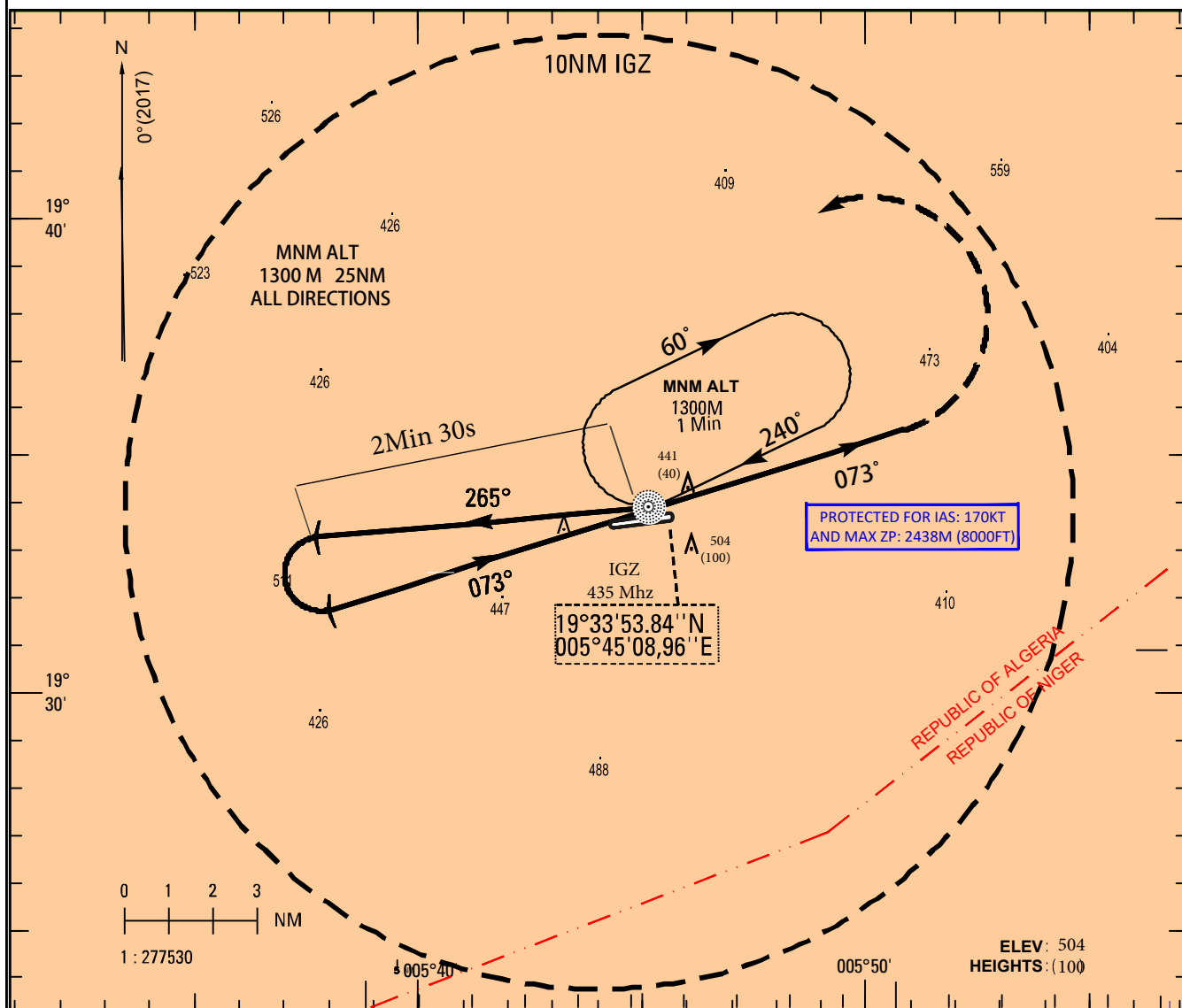
**INSTRUMENT APPROACH CHART**  
**CAT: A/B**  
**AD ELEV: 404 M**

**IN GUEZZAM-DATG**  
**NDB RWY 08**

ELEV, ALT IN METERS  
DIST IN NM  
BRG ARE MAG

TWR: 118.1

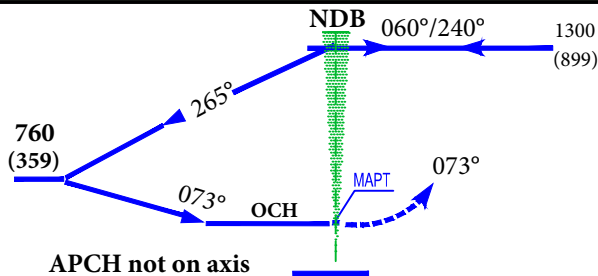
HEIGHTS RELATED TO  
THR 08 ALT: 401M



TA:1300M

**MISSED APCH:**

Climb following QDR 073° IGZ towards 850M QNH then turn left to join NDB IGZ climbing towards the Safety Altitude and follow the control instructions.



| CAT | NDB RWY 08 |        |        | CIRCLING |        |       |
|-----|------------|--------|--------|----------|--------|-------|
|     | OCH        | MDH    | RVR    | OCH      | MDH    | VIS   |
| A   | 190 m      | 625 ft | 1500 m | 190 m    | 625 ft | 1500m |
| B   |            |        |        |          |        |       |

NOTE: