

<b>AIS Tel</b> : +213 (0)23 97 85 47 <b>NOF Tel</b> : +213 (0)21 65 63 65 <b>AFTN</b> : DAAAYNYX <a href="http://www.sia-enna.dz">http://www.sia-enna.dz</a> algerian.ais@sia-enna.dz	<b>الجمهورية الجزائرية الديمقراطية الشعبية</b> <b>People's Democratic Republic of Algeria</b> National Establishment of the Air Navigation Direction of the Exploitation of the Air Navigation Department of Aeronautical Information Route de Cherarba BP 70D- Dar El Beida Alger- Algérie	<b>AIRAC AMDT</b> <b>NR 02/24</b>
		<b>PUBLICATION</b> <b>30 MAY 24</b>
<b>EFFECT DATE : 11 JUL 24</b>		

The changes shown on this coversheet are an abbreviated overview. See AIP pages for changes in detail.

**This AIRAC AMDT contains:**

- 1- In Guezzam aerodrome (DATG AD) - New IAP NDB RWY 08 CAT A/B.

<i>REMOVE</i>		<i>INSERT</i>	
<i>PAGE N°</i>	<i>DATE</i>	<i>PAGE N°</i>	<i>DATE</i>
<b>GEN</b>		<b>GEN</b>	
GEN 0-4-1	28 MAY 24	GEN 0-4-1	11 JUL 24
GEN 0-4-4	28 MAY 24	GEN 0-4-4	11 JUL 24
GEN 2-5-2	18 JAN 24	GEN 2-5-2	11 JUL 24
<b>AD</b>		<b>AD</b>	
<b>DATG</b>		<b>DATG</b>	
AD2 DATG-6	18 MAY 23	AD2 DATG-6	11 JUL 24
		AD2 DATG- IAC2	11 JUL 24

**CNL NOTAM** : NIL.

**CNL AIP SUP** : AIP SUP 05/24 of 11 JUL 24.



## GEN 0-4 CHECKLIST OF AIP PAGES

PAGE	DATE	PAGE	DATE	PAGE	DATE	PAGE	DATE
PART 1 - GENERAL (GEN)						1-12-2	18 MAY 23
GEN 0		2-1-2	18 MAY 23	3-5-2	18 MAY 23	1-13-1	18 MAY 23
0-1-1	18 MAY 23	2-2-1	18 MAY 23	3-5-3	18 MAY 23	1-14-1	18 MAY 23
0-1-2	18 MAY 23	2-2-2	28 MAY 24	3-5-4	18 MAY 23	1-14-2	18 MAY 23
0-1-3	18 MAY 23	2-2-3	18 MAY 23	3-5-5	18 MAY 23	1-14-3	18 MAY 23
0-2-1	18 MAY 23	2-2-4	18 MAY 23	3-5-6	18 MAY 23	1-14-4	18 MAY 23
0-3-1	18 MAY 23	2-2-5	18 MAY 23	3-6-1	18 MAY 23	1-14-5	18 MAY 23
<b>0-4-1</b>	<b>28 MAY 24</b>	2-2-6	18 MAY 23	3-6-2	18 MAY 23	1-14-6	18 MAY 23
0-4-2	28 MAY 24	2-2-7	18 MAY 23	3-6-3	18 MAY 23	1-14-7	18 MAY 23
0-4-3	28 MAY 24	2-2-8	18 MAY 23	3-6-4	18 MAY 23	ENR 2	
<b>0-4-4</b>	<b>28 MAY 24</b>	2-2-9	18 MAY 23	3-6-5	18 MAY 23	2-1-1	18 MAY 23
0-4-5	15 JUN 23	2-2-10	18 MAY 23	GEN 4		2-1-2	18 MAY 23
0-5-1	18 MAY 23	2-2-11	18 MAY 23	4-1-1	18 MAY 23	2-1-3	18 MAY 23
0-6-1	18 MAY 23	2-2-12	18 MAY 23	4-1-2	18 MAY 23	2-2-1	18 MAY 23
0-6-2	18 MAY 23	2-2-13	18 MAY 23	4-1-3	18 MAY 23	ENR 3	
0-6-3	18 MAY 23	2-2-14	18 MAY 23	4-2-1	18 MAY 23	3-1-1	15 JUN 23
GEN 1		2-2-15	18 MAY 23	4-2-2	18 MAY 23	3-1-2	15 JUN 23
1-1-1	28 MAY 24	2-2-16	18 MAY 23	4-2-3	18 MAY 23	3-1-3	15 JUN 23
1-2-1	18 MAY 23	2-3-1	18 MAY 23	4-2-4	18 MAY 23	3-1-4	15 JUN 23
1-2-2	18 MAY 23	2-3-2	18 MAY 23	4-2-5	18 MAY 23	3-1-5	15 JUN 23
1-3-1	18 MAY 23	2-3-3	18 MAY 23	4-2-6	18 MAY 23	3-1-6	15 JUN 23
1-4-1	18 MAY 23	2-3-4	18 MAY 23	4-2-7	18 MAY 23	3-1-7	15 JUN 23
1-4-2	28 MAY 24	2-3-5	18 MAY 23	4-2-8	18 MAY 23	3-1-8	15 JUN 23
1-5-1	18 MAY 23	2-4-1	18 MAY 23	Annexe I	18 MAY 23	3-1-9	15 JUN 23
1-5-2	18 MAY 23	2-5-1	18 JAN 24	Annexe II	18 MAY 23	3-1-10	15 JUN 23
1-5-3	18 MAY 23	<b>2-5-2</b>	<b>28 MAY 24</b>	Annexe III	18 MAY 23	3-1-11	15 JUN 23
1-5-4	18 MAY 23	2-6-1	18 MAY 23	PART 2 - EN-ROUTE (ENR)		3-1-12	15 JUN 23
1-5-5	18 MAY 23	2-6-2	18 MAY 23	ENR 0		3-1-13	28 MAY 24
1-5-6	18 MAY 23	2-7-1	18 MAY 23	0-6-1	18 MAY 23	3-1-14	28 MAY 24
1-5-7	18 MAY 23	2-7-2	18 MAY 23	0-6-2	18 MAY 23	3-1-15	15 JUN 23
1-5-8	18 MAY 23	2-7-3	18 MAY 23	ENR 1		3-1-16	15 JUN 23
1-5-9	18 MAY 23	2-7-4	18 MAY 23	1-1-1	18 MAY 23	3-1-17	15 JUN 23
1-5-10	18 MAY 23	2-7-5	18 MAY 23	1-2-1	18 MAY 23	3-1-18	15 JUN 23
1-5-11	18 MAY 23	2-7-6	18 MAY 23	1-3-1	18 MAY 23	3-1-19	15 JUN 23
1-5-12	18 MAY 23	2-7-7	18 MAY 23	1-3-2	18 MAY 23	3-1-20	15 JUN 23
1-5-13	18 MAY 23	2-7-8	18 MAY 23	1-4-1	18 MAY 23	3-1-21	15 JUN 23
1-5-14	18 MAY 23	2-7-9	18 MAY 23	1-4-2	18 MAY 23	3-1-22	15 JUN 23
1-5-15	18 MAY 23	2-7-10	18 MAY 23	1-4-3	18 MAY 23	3-1-23	15 JUN 23
1-5-16	28 MAY 24	GEN 3		1-4-4	18 MAY 23	3-1-24	15 JUN 23
1-5-17	18 MAY 23	3-1-1	18 MAY 23	1-5-1	18 MAY 23	3-1-25	15 JUN 23
1-5-18	18 MAY 23	3-1-2	18 MAY 23	1-6-1	18 MAY 23	3-1-26	15 JUN 23
1-6-1	18 MAY 23	3-1-3	18 MAY 23	1-6-2	18 MAY 23	3-1-27	15 JUN 23
1-6-2	18 MAY 23	3-1-4	18 MAY 23	1-6-3	18 MAY 23	3-1-28	15 JUN 23
1-6-3	18 MAY 23	3-2-1	18 MAY 23	1-6-4	18 MAY 23	3-1-29	15 JUN 23
1-6-4	18 MAY 23	3-2-2	18 MAY 23	1-7-1	18 MAY 23	3-1-30	28 MAY 24
1-6-5	18 MAY 23	3-3-1	28 MAY 24	1-7-2	18 MAY 23	3-1-31	28 MAY 24
1-6-6	18 MAY 23	3-3-2	18 MAY 23	1-7-3	18 MAY 23	3-1-32	15 JUN 23
1-6-7	18 MAY 23	3-3-3	18 MAY 23	1-7-4	18 MAY 23	3-1-33	15 JUN 23
1-6-8	29 FEB 24	3-4-1	28 MAY 24	1-8-1	18 MAY 23		
1-7-1	18 MAY 23	3-4-2	18 MAY 23	1-9-1	18 MAY 23	3-2-1	15 JUN 23
1-7-2	18 MAY 23	3-4-3	18 MAY 23	1-9-2	18 MAY 23	3-2-2	15 JUN 23
1-7-3	18 MAY 23	3-4-4	18 MAY 23	1-10-1	18 MAY 23	3-2-3	15 JUN 23
1-7-4	18 MAY 23	3-4-5	18 MAY 23	1-10-2	18 MAY 23	3-2-4	15 JUN 23
1-7-5	18 MAY 23	3-4-6	18 MAY 23	1-10-3	18 MAY 23	3-2-5	15 JUN 23
GEN 2		3-4-7	18 MAY 23	1-11-1	18 MAY 23	3-2-6	15 JUN 23
2-1-1	18 MAY 23	3-5-1	18 MAY 23	1-12-1	18 MAY 23	3-2-7	15 JUN 23

PAGE	DATE	PAGE	DATE	PAGE	DATE
3-2-8	15 JUN 23	AD 2 DAUA-VAC1	18 MAY 23	AD 2 DABT-VAC1	18 MAY 23
3-2-9	15 JUN 23				
3-2-10	15 JUN 23	AD2 DAAG-1	14 SEP 23	AD2 DAOR-1	16 MAY 24
3-2-11	15 JUN 23	AD2 DAAG-2	14 SEP 23	AD2 DAOR-2	18 MAY 23
3-2-12	15 JUN 23	AD2 DAAG-3	14 SEP 23	AD2 DAOR-3	18 MAY 23
3-2-13	15 JUN 23	AD2 DAAG-4	14 SEP 23	AD2 DAOR-4	18 MAY 23
3-2-14	15 JUN 23	AD2 DAAG-5	14 SEP 23	AD2 DAOR-5	18 MAY 23
3-3-1	18 MAY 23	AD2 DAAG-6	14 SEP 23	AD2 DAOR-6	18 MAY 23
3-4-1	18 MAY 23	AD2 DAAG-7	14 SEP 23	AD2 DAOR-AD	16 MAY 24
ENR 4		AD2 DAAG-AD	14 SEP 23	AD2 DAOR-AOC1	18 MAY 23
4-1-1	14 SEP 23	AD2 DAAG-APDC1	14 SEP 23	AD2 DAOR-AOC2	18 MAY 23
<b>4-1-2</b>	<b>28 MAY 24</b>	AD2 DAAG-APDC DATA1	14 SEP 23	AD2 DAOR-AOC3	18 MAY 23
4-1-3	18 DEC 23	AD2 DAAG-ATCSMAC	16 MAY 24	AD2 DAOR-AOC4	18 MAY 23
4-2-1	18 MAY 23	AD2 DAAG-AOC1	14 SEP 23	AD2 DAOR-IAC1	18 MAY 23
4-3-1	18 MAY 23	AD2 DAAG-AOC2	14 SEP 23	AD2 DAOR-IAC2	18 MAY 23
4-4-1	15 JUN 23	AD2 DAAG-PATC	18 MAY 23	AD2 DAOR-IAC3	18 MAY 23
4-4-2	15 JUN 23	AD2 DAAG-SID1	16 MAY 24	AD2 DAOR-IAC4	18 MAY 23
4-4-3	15 JUN 23	AD2 DAAG-SID2	16 MAY 24	AD2 DAOR-IAC5	18 MAY 23
4-5-1	18 MAY 23	AD2 DAAG-SID3	16 MAY 24	AD2 DAOR-IAC6	18 MAY 23
4-5-2	18 MAY 23	AD2 DAAG-SID4	16 MAY 24	AD2 DAOR-VAC1	18 MAY 23
ENR 5		AD2 DAAG-IAC1	18 DEC 23		
5-1-1	18 MAY 23	AD2 DAAG-IAC2	16 MAY 24	AD2 DAAE-1	29 FEB 24
5-1-2	16 MAY 24	AD2 DAAG-IAC3	18 DEC 23	AD2 DAAE-2	18 MAY 23
5-1-3	18 DEC 23	AD2 DAAG-IAC4	18 DEC 23	AD2 DAAE-3	18 MAY 23
5-1-4	16 MAY 24	AD2 DAAG-IAC5	18 DEC 23	AD2 DAAE-4	18 MAY 23
5-1-5	18 MAY 23	AD2 DAAG-IAC6	18 DEC 23	AD2 DAAE-5	18 MAY 23
5-1-6	16 MAY 24	AD2 DAAG-IAC7	18 DEC 23	AD2 DAAE-6	29 FEB 24
5-1-7	18 MAY 23	AD2 DAAG-IAC8	18 DEC 23	AD2 DAAE-AD	29 FEB 24
5-1-8	18 MAY 23	AD2 DAAG-VAC1	14 SEP 23	AD2 DAAE-AOC1	18 MAY 23
5-1-9	16 MAY 24	AD2 DAAG-VAC2	14 SEP 23	AD2 DAAE-AOC2	18 MAY 23
5-2-1	13 JUL 23			AD2 DAAE-IAC1	18 MAY 23
5-3-1	18 MAY 23	AD2 DABB-1	16 MAY 24	AD2 DAAE-IAC2	18 MAY 23
5-4-1	18 MAY 23	AD2 DABB-2	18 MAY 23	AD2 DAAE-IAC3	18 MAY 23
5-5-1	18 MAY 23	AD2 DABB-3	18 JAN 24	AD2 DAAE-IAC4	18 MAY 23
5-6-1	18 MAY 23	AD2 DABB-4	18 JAN 24	AD2 DAAE-IAC5	29 FEB 24
ENR 6		AD2 DABB-5	18 MAY 23	AD2 DAAE-DATA1	18 MAY 23
6-1-1	16 MAY 24	AD2 DABB-6	16 MAY 24	AD2 DAAE-DATA2	18 MAY 23
		AD2 DABB- AD	16 MAY 24	AD2 DAAE-IAC6	29 FEB 24
PART 3 - AERODROMES		AD2 DABB- AOC1	18 MAY 23	AD2 DAAE-DATA3	29 FEB 24
(AD)		AD2 DABB- AOC2	18 MAY 23	AD2 DAAE-DATA4	18 MAY 23
AD 0		AD2 DABB- AOC3	18 MAY 23	AD2 DAAE-IAC7	29 FEB 24
0-6-1	18 MAY 23	AD2 DABB-IAC1	18 MAY 23	AD2 DAAE-DATA5	18 MAY 23
AD 1		AD2 DABB-IAC2	18 MAY 23	AD2 DAAE-VAC1	29 FEB 24
1-1-1	18 MAY 23	AD2 DABB-IAC3	18 MAY 23		
1-2-1	18 MAY 23	AD2 DABB-IAC4	18 MAY 23	AD2 DAUB-1	16 MAY 24
1-2-2	18 MAY 23	AD2 DABB-IAC5	18 MAY 23	AD2 DAUB-2	29 FEB 24
1-2-3	18 MAY 23	AD2 DABB-IAC6	18 MAY 23	AD2 DAUB-3	29 FEB 24
1-3-1	18 JAN 24	AD2 DABB-IAC7	18 MAY 23	AD2 DAUB-4	29 FEB 24
1-4-1	18 MAY 23	AD2 DABB-IAC8	18 MAY 23	AD2 DAUB-5	29 FEB 24
1-5-1	18 MAY 23	AD2 DABB-IAC9	18 MAY 23	AD2 DAUB-6	29 FEB 24
AD 2		AD2 DABB-IAC10	18 MAY 23	AD2 DAUB-AD	16 MAY 24
AD 2 DAUA-1	18 MAY 23	AD 2 DABB-VAC1	18 MAY 23	AD2 DAUB-AOC1	18 MAY 23
AD 2 DAUA-2	18 MAY 23			AD2 DAUB-AOC2	18 MAY 23
AD 2 DAUA-3	18 MAY 23	AD 2 DABT-1	18 MAY 23	AD2 DAUB-IAC1	29 FEB 24
AD 2 DAUA-4	18 MAY 23	AD 2 DABT-2	18 MAY 23	AD2 DAUB-IAC2	29 FEB 24
AD 2 DAUA-5	18 MAY 23	<b>AD 2 DABT-3</b>	<b>28 MAY 23</b>	AD2 DAUB-IAC3	29 FEB 24
AD 2 DAUA-6	18 MAY 23	AD 2 DABT-4	12 OCT 23	AD2 DAUB-IAC4	29 FEB 24
AD 2 DAUA-AD	18 MAY 23	AD 2 DABT-5	18 MAY 23	AD2 DAUB-IAC5	18 MAY 23
AD 2 DAUA-AOC1	18 MAY 23	AD 2 DABT-6	18 MAY 23	AD2 DAUB-VAC1	29 FEB 24
AD 2 DAUA-IAC1	18 MAY 23	AD 2 DABT-AD	18 MAY 23		
AD 2 DAUA-IAC2	18 MAY 23	AD 2 DABT-IAC1	18 MAY 23	AD2 DATM-1	16 MAY 24
AD 2 DAUA-IAC3	18 MAY 23	AD 2 DABT-IAC2	18 MAY 23	AD2 DATM-2	18 MAY 23
AD 2 DAUA-IAC4	18 MAY 23	AD 2 DABT-IAC3	12 OCT 23	AD2 DATM-3	18 MAY 23
AD 2 DAUA-IAC5	18 MAY 23	AD 2 DABT-IAC4	18 MAY 23	AD2 DATM-4	18 MAY 23

PAGE	DATE	PAGE	DATE	PAGE	DATE
AD2 DATM-5	18 MAY 23	AD 2 DAAJ-1	16 MAY 24	AD 2 DAUG-1	18 MAY 23
AD2 DATM-6	14 SEP 23	AD 2 DAAJ-2	18 JAN 24	AD 2 DAUG-2	18 MAY 23
AD2 DATM-AD	16 MAY 24	AD 2 DAAJ-3	18 MAY 23	AD 2 DAUG-3	18 MAY 23
AD2 DATM-AOC1	14 SEP 23	AD 2 DAAJ-4	18 MAY 23	AD 2 DAUG-4	18 MAY 23
AD2 DATM-AOC2	14 SEP 23	AD 2 DAAJ-5	18 MAY 23	AD2 DAUG-5	18 MAY 23
AD2 DATM-IAC1	14 SEP 23	AD 2 DAAJ-6	18 JAN 24	AD2 DAUG-6	18 MAY 23
AD2 DATM-IAC2	14 SEP 23	AD 2 DAAJ-AD	16 MAY 24	AD 2 DAUG-AD	18 MAY 23
AD2 DATM-VAC1	14 SEP 23	AD 2 DAAJ-AOC1	18 MAY 23	AD 2 DAUG-AOC1	18 MAY 23
		AD 2 DAAJ-AOC2	18 MAY 23	AD 2 DAUG-AOC2	18 MAY 23
AD 2 DAAD-1	16 MAY 24	AD 2 DAAJ-IAC1	18 MAY 23	AD 2 DAUG-IAC1	18 MAY 23
AD 2 DAAD-2	18 MAY 23	AD 2 DAAJ-IAC2	18 MAY 23	AD 2 DAUG-IAC2	18 MAY 23
AD 2 DAAD-3	18 JAN 24	AD 2 DAAJ-IAC3	18 MAY 23	AD 2 DAUG-IAC3	18 MAY 23
AD 2 DAAD-4	18 MAY 23	AD 2 DAAJ-IAC4	18 MAY 23	AD 2 DAUG-VAC1	18 MAY 23
AD 2 DAAD-5	18 MAY 23	AD 2 DAAJ-IAC5	18 MAY 23		
AD 2 DAAD-6	16 MAY 24	AD 2 DAAJ-IAC6	18 MAY 23	AD 2 DAOV-1	18 MAY 23
AD 2 DAAD-AD	16 MAY 24	AD 2 DAAJ-VAC1	18 MAY 23	AD 2 DAOV-2	18 MAY 23
AD 2 DAAD-AOC1	18 MAY 23			AD 2 DAOV-3	18 MAY 23
AD 2 DAAD-AOC2	18 MAY 23	AD2 DAOY-1	18 JAN 24	AD 2 DAOV-4	18 MAY 23
AD 2 DAAD-IAC1	18 MAY 23	AD2 DAOY-2	18 MAY 23	AD 2 DAOV-5	18 MAY 23
AD 2 DAAD-IAC2	18 MAY 23	AD2 DAOY-3	18 MAY 23	AD 2 DAOV-6	18 MAY 23
AD 2 DAAD-IAC3	18 MAY 23	AD2 DAOY-4	18 MAY 23	AD 2 DAOV-AD	18 MAY 23
AD 2 DAAD-VAC1	18 MAY 23	AD2 DAOY-5	18 MAY 23	AD 2 DAOV-IAC1	18 MAY 23
		AD2 DAOY-6	18 JAN 24	AD 2 DAOV-IAC2	18 MAY 23
AD 2 DAOI-1	16 MAY 24	AD2 DAOY-AD	18 JAN 24	AD 2 DAOV-VAC1	18 MAY 23
AD 2 DAOI-2	07 JAN 24	AD2 DAOY-AOC1	18 MAY 23		
AD 2 DAOI-3	07 JAN 24	AD2 DAOY-AOC2	18 MAY 23	<b>AD 2 DAUH-1</b>	<b>28 MAY 24</b>
AD 2 DAOI-4	07 JAN 24	AD2 DAOY-IAC1	18 MAY 23	AD 2 DAUH-2	18 MAY 23
AD 2 DAOI-5	07 JAN 24	AD2 DAOY-IAC2	18 MAY 23	<b>AD 2 DAUH-3</b>	<b>28 MAY 24</b>
AD 2 DAOI-6	07 JAN 24			<b>AD 2 DAUH-4</b>	<b>28 MAY 24</b>
AD 2 DAOI-AD	16 MAY 24	AD 2 DAUE-1	18 MAY 23	AD 2 DAUH-5	18 MAY 23
AD 2 DAOI-AOC1	18 MAY 23	AD 2 DAUE-2	18 MAY 23	<b>AD 2 DAUH-6</b>	<b>28 MAY 24</b>
AD 2 DAOI-AOC2	18 MAY 23	AD 2 DAUE-3	18 MAY 23	AD 2 DAUH-7	12 OCT 23
AD 2 DAOI-IAC1	18 MAY 23	AD 2 DAUE-4	12 OCT 23	<b>AD 2 DAUH-AD</b>	<b>28 MAY 24</b>
AD 2 DAOI-IAC2	18 MAY 23	AD 2 DAUE-5	12 OCT 23	AD 2 DAUH-APDC1	18 DEC 23
AD 2 DAOI-VAC1	18 MAY 23	AD 2 DAUE-6	18 JAN 24	AD 2 DAUH-APDCDATA1	12 OCT 23
		AD 2 DAUE-AD	12 OCT 23	AD 2 DAUH-AOC1	18 DEC 23
AD 2 DABC-1	18 DEC 23	AD 2 DAUE-AOC1	18 MAY 23	AD 2 DAUH-AOC2	18 DEC 23
AD 2 DABC-2	18 DEC 23	AD 2 DAUE-AOC2	18 MAY 23	AD 2 DAUH-SID	18 DEC 23
AD 2 DABC-3	18 DEC 23	AD 2 DAUE-IAC1	18 MAY 23	AD 2 DAUH-STAR	18 DEC 23
AD 2 DABC-4	18 MAY 23	AD 2 DAUE-IAC2	18 MAY 23	AD 2 DAUH-IAC1	18 DEC 23
AD 2 DABC-5	18 DEC 23	AD 2 DAUE-VAC1	18 MAY 23	AD 2 DAUH-IAC2	18 DEC 23
AD 2 DABC-6	29 FEB 24			AD2 DAUH-IAC3	18 DEC 23
AD 2 DABC-7	18 MAY 23	AD 2 DAUO-1	18 MAY 23	AD 2 DAUH-IAC4	18 DEC 23
AD 2 DABC-AD	29 FEB 24	AD 2 DAUO-2	18 MAY 23	<b>AD 2 DAUH-VAC1</b>	<b>28 MAY 24</b>
AD 2 DABC-AOC1	18 MAY 23	AD 2 DAUO-3	18 MAY 23		
AD 2 DABC-AOC2	18 MAY 23	AD 2 DAUO-4	12 OCT 23	AD 2 DAAP-1	16 MAY 24
AD 2 DABC-AOC3	18 MAY 23	AD 2 DAUO-5	18 MAY 23	AD 2 DAAP-2	14 SEP 23
AD 2 DABC-AOC4	18 MAY 23	AD 2 DAUO-6	18 MAY 23	AD 2 DAAP-3	14 SEP 23
AD 2 DABC-IAC1	18 DEC 23	AD 2 DAUO-AD	18 JAN 24	AD 2 DAAP-4	14 SEP 23
AD 2 DABC-IAC2	29 FEB 24	AD 2 DAUO-AOC1	18 MAY 23	AD 2 DAAP-5	14 SEP 23
AD 2 DABC-IAC3	18 DEC 23	AD 2 DAUO-AOC2	18 MAY 23	AD 2 DAAP-6	14 SEP 23
AD 2 DABC-IAC4	18 DEC 23	AD 2 DAUO-IAC1	18 MAY 23	AD 2 DAAP-AD	16 MAY 24
AD 2 DABC-IAC5	29 FEB 24	AD 2 DAUO-IAC2	18 MAY 23	AD 2 DAAP-IAC1	14 SEP 23
AD 2 DABC-IAC6	29 FEB 24	AD 2 DAUO-IAC3	12 OCT 23	AD 2 DAAP-IAC2	14 SEP 23
AD 2 DABC-IAC7	29 FEB 24	AD 2 DAUO-IAC4	12 OCT 23	AD 2 DAAP-IAC3	14 SEP 23
AD2 DABC-VAC1	29 FEB 24	AD 2 DAUO-IAC5	12 OCT 23	AD 2 DAAP-IAC4	14 SEP 23
		AD 2 DAUO-VAC1	18 MAY 23	AD 2 DAAP-VAC1	14 SEP 23

PAGE	DATE	PAGE	DATE	PAGE	DATE
AD 2 DATG-1	16 MAY 24	AD 2 DAUU-5	18 MAY 23	AD2 DAOB-IAC3	18 MAY 23
AD 2 DATG-2	18 MAY 23	AD 2 DAUU-6	18 JAN 24	AD2 DAOB-IAC4	18 MAY 23
AD 2 DATG-3	18 MAY 23	AD 2 DAUU-AD	16 MAY 24	AD2 DAOB-VAC1	18 MAY 23
AD 2 DATG-4	18 MAY 23	AD 2 DAUU-AOC1	18 MAY 23		
AD 2 DATG-5	18 MAY 23	AD 2 DAUU-AOC2	18 MAY 23	AD 2 DAUT-1	18 MAY 23
<b>AD 2 DATG-6</b>	<b>11 JUL 24</b>	AD 2 DAUU-IAC1	18 MAY 23	AD 2 DAUT-2	18 MAY 23
AD 2 DATG-AD	16 MAY 24	AD 2 DAUU-IAC2	18 MAY 23	AD 2 DAUT-3	18 MAY 23
AD 2 DATG-AOC1	18 MAY 23	AD 2 DAUU-IAC3	18 JAN 24	AD 2 DAUT-4	18 MAY 23
AD 2 DATG-AOC2	18 MAY 23	AD 2 DAUU-IAC4	18 MAY 23	AD 2 DAUT-5	18 MAY 23
AD 2 DATG-IAC1	18 MAY 23	AD 2 DAUU-IAC5	18 MAY 23	AD 2 DAUT-6	18 MAY 23
<b>AD 2 DATG-IAC2</b>	<b>11 JUL 24</b>	AD 2 DAUU-IAC6	18 MAY 23	AD 2 DAUT-AD	18 MAY 23
AD 2 DATG-VAC1	18 MAY 23	AD 2 DAUU-IAC7	18 MAY 23	AD 2 DAUT-IAC1	18 MAY 23
		AD 2 DAUU-VAC1	18 MAY 23	AD 2 DAUT-IAC2	18 MAY 23
				AD 2 DAUT-IAC3	18 JAN 24
AD 2 DAUI-1	14 SEP 23			AD 2 DAUT-IAC4	18 MAY 23
AD 2 DAUI-2	14 SEP 23			AD 2 DAUT-VAC1	18 MAY 23
AD 2 DAUI-3	18 MAY 23	AD 2 DAAS-1	16 MAY 24		
AD 2 DAUI-4	14 SEP 23	AD 2 DAAS-2	29 FEB 24		
AD 2 DAUI-5	14 SEP 23	AD 2 DAAS-3	29 FEB 24		
AD 2 DAUI-6	14 SEP 23	AD 2 DAAS-4	29 FEB 24	AD2 DAOF-1	16 MAY 24
AD 2 DAUI -AD	14 SEP 23	AD 2 DAAS-5	18 MAY 23	AD2 DAOF-2	14 SEP 23
AD 2 DAUI-IAC1	14 SEP 23	AD 2 DAAS-6	16 MAY 24	AD2 DAOF-3	18 MAY 23
AD 2 DAUI-IAC2	14 SEP 23	AD 2 DAAS-AD	16 MAY 24	AD2 DAOF-4	18 MAY 23
AD 2 DAUI-IAC3	14 SEP 23	AD 2 DAAS-AOC1	12 OCT 23	AD2 DAOF-5	18 MAY 23
AD 2 DAUI-IAC4	14 SEP 23	AD 2 DAAS-IAC1	18 MAY 23	AD2 DAOF-6	14 SEP 23
AD 2 DAUI-VAC1	14 SEP 23	AD 2 DAAS-IAC2	18 MAY 23	AD2 DAOF-AD	16 MAY 24
		AD 2 DAAS-IAC3	18 MAY 23	AD2 DAOF-IAC1	18 MAY 23
		AD 2 DAAS-IAC4	18 MAY 23	AD 2 DAOF-IAC2	18 MAY 23
AD 2 DAAV-1	18 DEC 23	AD 2 DAAS-VAC1	18 MAY 23	AD2 DAOF-IAC3	18 MAY 23
AD 2 DAAV-2	18 MAY 23			AD2 DAOF-IAC4	18 MAY 23
AD 2 DAAV-3	18 MAY 23			AD2 DAOF-IAC5	18 MAY 23
AD 2 DAAV-4	12 OCT 23	AD 2 DAAT-1	16 MAY 24	AD 2 DAOF-VAC1	18 MAY 23
AD 2 DAAV-5	18 MAY 23	AD 2 DAAT-2	29 FEB 24		
AD 2 DAAV-6	18 MAY 23	AD 2 DAAT-3	28 MAY 24		
AD 2 DAAV-AD	18 MAY 23	AD 2 DAAT-4	29 FEB 24	AD 2 DAON-1	18 DEC 23
AD 2 DAAV-IAC1	12 OCT 23	AD 2 DAAT-5	28 MAY 24	AD 2 DAON-2	18 MAY 23
AD 2 DAAV-IAC2	12 OCT 23	AD 2 DAAT-6	29 FEB 24	AD 2 DAON-3	18 MAY 23
AD 2 DAAV-IAC3	18 MAY 23	AD 2 DAAT-AD	28 MAY 24	AD2 DAON-4	12 OCT 23
AD 2 DAAV-IAC4	18 MAY 23	AD 2 DAAT-DATA	28 MAY 24	AD 2 DAON-5	18 MAY 23
AD 2 DAAV-IAC5	18 MAY 23	AD 2 DAAT-AOC1	29 FEB 24	AD 2 DAON-6	18 DEC 23
AD 2 DAAV-VAC1	18 MAY 23	AD 2 DAAT-AOC2	29 FEB 24	AD 2 DAON-AD	18 DEC 23
		AD 2 DAAT-AOC3	29 FEB 24	AD 2 DAON-AOC1	18 DEC 23
AD 2 DAOO-1	14 SEP 23	AD 2 DAAT-IAC1	29 FEB 24	AD 2 DAON-AOC2	18 DEC 23
AD 2 DAOO-2	18 MAY 23	AD 2 DAAT-IAC2	29 FEB 24	AD 2 DAON-IAC1	18 DEC 23
AD 2 DAOO-3	18 MAY 23	AD 2 DAAT-IAC3	29 FEB 24	AD 2 DAON-IAC2	18 DEC 23
AD 2 DAOO-4	18 MAY 23	AD 2 DAAT-IAC4	29 FEB 24	AD 2 DAON-IAC3	29 FEB 24
AD 2 DAOO-5	18 MAY 23	AD 2 DAAT-IAC5	29 FEB 24	AD 2 DAON-IAC4	29 FEB 24
AD 2 DAOO-6	14 SEP 23	AD 2 DAAT-VAC1	28 MAY 24	AD 2 DAON-VAC1	18 DEC 23
AD 2 DAOO-7	14 SEP 23				
AD 2 DAOO-AD	14 SEP 23	AD 2 DABS-1	18 JAN 24	AD 2 DAUK-1	18 MAY 23
AD 2 DAOO-APDC	14 SEP 23	AD 2 DABS-2	18 JAN 24	AD 2 DAUK-2	18 MAY 23
AD 2 DAOO-APDC DATA	14 SEP 23	AD 2 DABS-3	18 JAN 24	AD 2 DAUK-3	18 JAN 24
AD 2 DAOO-SID	14 SEP 23	AD 2 DABS-4	18 JAN 24	AD 2 DAUK-4	18 MAY 23
AD 2 DAOO-STAR	14 SEP 23	AD 2 DABS-5	18 JAN 24	AD 2 DAUK-5	18 MAY 23
AD 2 DAOO-AOC1	14 SEP 23	AD 2 DABS-6	18 JAN 24	AD 2 DAUK-6	18 JAN 24
AD 2 DAOO-AOC2	14 SEP 23	AD 2 DABS-AD	18 JAN 24	AD 2 DAUK-AD	18 JAN 24
AD 2 DAOO-IAC1	14 SEP 23	AD 2 DABS-AOC1	18 JAN 24	AD 2 DAUK-IAC1	18 MAY 23
AD 2 DAOO-IAC2	14 SEP 23	AD 2 DABS-AOC2	18 JAN 24	AD 2 DAUK- IAC2	18 MAY 23
AD 2 DAOO-IAC3	14 SEP 23	AD 2 DABS-IAC1	18 JAN 24	AD 2 DAUK- IAC3	18 MAY 23
AD 2 DAOO-IAC4	14 SEP 23	AD 2 DABS-IAC2	18 JAN 24	AD 2 DAUK- IAC4	18 MAY 23
AD 2 DAOO-IAC5	14 SEP 23	AD 2 DABS-VAC1	18 JAN 24	AD 2 DAUK- IAC5	18 JAN 24
AD 2 DAOO-IAC6	14 SEP 23			AD 2 DAUK- VAC1	18 MAY 23
AD 2 DAOO-IAC7	14 SEP 23	AD 2 DAOB-1	18 MAY 23		
AD 2 DAOO-IAC8	14 SEP 23	AD 2 DAOB-2	18 JAN 24	AD 2 DAUZ-1	16 MAY 24
AD 2 DAOO-VAC1	14 SEP 23	AD 2 DAOB-3	18 MAY 23	AD 2 DAUZ-2	18 MAY 23
AD 2 DAOO-VAC2	14 SEP 23	AD 2 DAOB-4	18 MAY 23	AD 2 DAUZ-3	18 MAY 23
		AD 2 DAOB-5	18 MAY 23	AD 2 DAUZ-4	18 MAY 23
AD 2 DAUU-1	16 MAY 24	AD 2 DAOB-6	18 JAN 24	AD 2 DAUZ-5	18 MAY 23
AD 2 DAUU-2	18 JAN 24	AD2 DAOB-AD	18 MAY 23	AD 2 DAUZ-6	18 MAY 23
AD 2 DAUU-3	18 JAN 24	AD2 DAOB-IAC1	18 MAY 23	AD 2 DAUZ-AD	16 MAY 24

## GEN 2.5 LIST OF RADIONAVIGATION AIDS

ID	Station name	Aid	Purpose	Station name	Aid	ID	Purpose
AD	ADRAR	ILS	A	ADRAR	ILS	AD	A
ADR	ADRAR	VOR/DME	AE	ADRAR	VOR/DME	ADR	AE
AE	ALGIERS (Marmora)	NDB	AE	ALGIERS	ILS	AG	A
AG	ALGIERS	ILS	A	ALGIERS	ILS	AL	A
AL	ALGIERS	ILS	A	ALGIERS	ILS	HB	A
ALR	ALGIERS (Dar ElBeida)	DVOR/DME	AE	ALGIERS (Boufarik)	DVOR/DME	SDM	AE
AN	ANNABA	DME	AE	ALGIERS (Dar-El-Beida)	DVOR/DME	ALR	AE
AN	ANNABA	ILS	A	ALGIERS (Marmora)	NDB	MAR	A
ANB	ANNABA	VOR/DME	AE	ALGIERS (Reghaia)	L	OA	A
BAY	EL BAYADH	DVOR/DME	E	ANNABA	DME	AN	AE
BBS	BENI ABBES	NDB	E	ANNABA	ILS	AN	A
BBS	BENI ABBES	VOR/DME	E	ANNABA	L	BO	A
BC	BECHAR	ILS	A	ANNABA	VOR/DME	ANB	AE
BCR	BECHAR	NDB	A	BATNA	DVOR/DME	BTN	AE
BCR	BECHAR	VOR/DME	A	BATNA	ILS	BT	A
BI	BISKRA	ILS	A	BECHAR	ILS	BC	A
BIS	BISKRA	VOR/DME	AE	BECHAR	NDB	BCR	A
BJ	BEJAIA	DME	A	BECHAR	VOR/DME	BCR	AE
BJ	BEJAIA	ILS	A	BEJAIA	DME	BJ	A
BJA	BEJAIA	NDB	AE	BEJAIA	ILS	BJ	A
BJA	BEJAIA	VOR/DME	A	BEJAIA	NDB	BJA	AE
BNA	BENI AMRANE	NDB	AE	BEJAIA	VOR/DME	BJA	A
BO	ANNABA	L	A	BENI ABBES	NDB	BBS	E
BOD	Bordj Omar Driss	VOR/DME	AE	BENI ABBES	VOR/DME	BBS	E
BSA	BOU SAADA	DVOR/DME	AE	BENI AMRANE	NDB	BNA	AE
BSA	BOU SAADA (Ain-Ediss)	NDB	AE	BISKRA	ILS	BI	A
BT	BATNA	ILS	A	BISKRA	VOR/DME	BIS	AE
BTN	BATNA	DVOR/DME	AE	BORDJ MOKHTAR	NDB	MOK	AE
CHE	CHERCHELL	NDB	E	BORDJ MOKHTAR	VOR/DME	MOK	AE
CLF	CHLEF	VOR/DME	A	Bordj Omar Driss	VOR/DME	BOD	AE
CNE	Constantine	NDB	AE	BOU SAADA	DVOR/DME	BSA	AE
CNT	Constantine	ILS	A	BOU SAADA (Ain-Ediss)	NDB	BSA	AE
CSO	Constantine	DVOR/DME	AE	CHERCHELL	NDB	CHE	E
CT	Constantine	ILS	A	CHLEF	VOR/DME	CLF	A
DJ	Djanet	ILS	A	Constantine	DVOR/DME	CSO	AE
DJA	Djanet	DVOR/DME	AE	Constantine	ILS	CNT	A
ELO	EL OUED	NDB	AE	Constantine	ILS	CT	A
ELO	EL OUED	VOR/DME	AE	Constantine	NDB	CNE	AE
EO	EL OUED	ILS	A	Djanet	DVOR/DME	DJA	AE
GH	GHARDAIA	ILS	A	Djanet	ILS	DJ	A
GHA	GHARDAIA	NDB	AE	EL BAYADH	DVOR/DME	BAY	E
GHA	GHARDAIA (Noumérat)	DVOR/DME	AE	EL GOLEA (Nebka)	VOR/DME	MNA	AE
GRS	GHRISS	NDB	A	EL OUED	ILS	EO	A
GRS	GHRISS	VOR	AE	EL OUED	NDB	ELO	AE
HB	ALGIERS	ILS	A	EL OUED	VOR/DME	ELO	AE
HKI	HASSI KHEBI	NDB	E	GHARDAIA	ILS	GH	A
HM	HASSI MESSAOUD	DME	A	GHARDAIA (Noumérat)	DVOR/DME	GHA	AE
HM	HASSI MESSAOUD	ILS	A	GHARDAIA (Noumérat)	NDB	GHA	AE
HMB	HAMMAM BOUHADJAR	NDB	E	GHRISS	NDB	GRS	A
HMD	HASSI MESSAOUD	NDB	AE	GHRISS	VOR	GRS	AE
HME	HASSI MESSAOUD	VOR/DME	AE	Hammam Bou Hadjar	NDB	HMB	E
HRM	Hassi R'Mel	NDB	AE	HASSI KHEBI	NDB	HKI	E

IGZ	IN GUEZZAM	VOR	A	HASSI MESSAOUD	DME	HM	A
IGZ	IN GUEZZAM	NDB	A	HASSI MESSAOUD	ILS	HM	A
JIL	JIJEL (Taher)	VOR/DME	AE	HASSI MESSAOUD	NDB	HMB	AE
JL	JIJEL (Taher)	ILS	A	HASSI MESSAOUD	VOR/DME	HME	AE
MOK	BORDJ MOKHTAR	NDB	AE	IN GUEZZAM	VOR	IGZ	A
MOK	BORDJ MOKHTAR	VOR/DME	AE	IN GUEZZAM	NDB	IGZ	A
MOS	MOSTAGANEM	VOR/DME	E	JIJEL (Taher)	ILS	JL	A
OA	ALGIERS (Reghaia)	L	AE	JIJEL (Taher)	DVOR/DME	JIL	AE
OR	ORAN	ILS	A	MOSTAGANEM	VOR/DME	MOS	E
ORA	ORAN (Ahmed Benbella)	VOR/DME	A	ORAN	ILS	OR	A
OG	OUARGLA	ILS	A	ORAN (Ahmed Benbella)	VOR/DME	ORA	AE
OUR	OUARGLA	VOR/DME	AE	OUARGLA	ILS	OG	A
RGN	REGGAN	NDB	AE	OUARGLA	VOR/DME	OUR	AE
SDM	ALGIERS (Boufarik)	DVOR/DME	AE	REGGAN	NDB	RGN	E
ST	SETIF	ILS	AE	SETIF	VOR/DME	STF	A
STF	SETIF	VOR/DME	A	TAMENGHASSET	DVOR/DME	TMS	AE
TA	TAMENGHASSET	ILS	A	TAMENGHASSET	ILS	TA	A
TBS	TEBESSA (Bendjeradi)	DVOR/DME	AE	TAMENGHASSET	ILS	TM	A
TDF	TINDOUF	NDB	AE	TEBESSA (Bendjeradi)	DVOR/DME	TBS	AE
TDF	TINDOUF	VOR/DME	AE	TIARET (Ouachria)	VOR/DME	TRB	AE
TF	TINDOUF	ILS	A	TIMIMOUN	NDB	TIO	AE
GT	TOUGGOURT	ILS	A	TIMIMOUN	VOR/DME	TIO	AE
TGU	TOUGGOURT	VOR/DME	AE	TINDOUF	NDB	TDF	AE
TIO	TIMIMOUN	NDB	AE	TINDOUF	ILS	TF	A
TIO	TIMIMOUN	VOR/DME	AE	TINDOUF	VOR/DME	TDF	AE
TL	TLEMCEN	ILS	A	TLEMCEN	DVOR/DME	TLM	AE
TLM	TLEMCEN	DVOR/DME	AE	TLEMCEN	ILS	TL	A
TM	TAMENGHASSET	ILS	A	TOUGGOURT	ILS	GT	A
TMS	TAMENGHASSET	DVOR/DME	A	TOUGGOURT	VOR/DME	TGU	AE
TRB	TIARET (Ouachria)	VOR/DME	AE	ZARZAITINE	NDB	ZAR	AE
ZAR	ZARZAITINE	NDB	AE	ZARZAITINE	VOR/DME	IMN	AE
ZEM	ZEMMOURI	DVOR/DME	AE	ZEMMOURI	DVOR/DME	ZEM	AE
ZEM	ZEMMOURI	NDB	AE	ZEMMOURI	NDB	ZEM	AE



**DATG AD 2.13 DECLARED DISTANCES**

<i>RWY designator</i>	<i>TORA (m)</i>	<i>TODA (m)</i>	<i>ASDA (m)</i>	<i>LDA (m)</i>	<i>Remarks</i>
1	2	3	4	5	6
08	2200	2200	2200	2200	NIL
26	2200	2200	2200	2200	NIL

**DATG AD 2.14 APPROACH AND RUNWAY LIGHTING**

<i>RWY Designator</i>	<i>APCH LGT Type LEN INTST</i>	<i>THR LGT Color WBAR</i>	<i>VASIS (MEHT) PAPI</i>	<i>TDZ, LGT LEN</i>	<i>RWY Center Line LGT Length, spacing, color, INTST</i>	<i>RWY edge LGT LEN, spacing, color, INTST</i>	<i>RWY end LGT color, WBAR</i>	<i>SWY LGT LEN (M), Color</i>	<i>Remarks</i>
1	2	3	4	5	6	7	8	9	10
08	Nil	Green	PAPI 2,97°	Nil	Nil	2200M, 45M, White,	Red	Nil	Nil
26	Nil	Green	PAPI 2,96°	Nil	Nil	2200M, 45M, White,	Red	Nil	Nil

**DATG AD 2.15 OTHER LIGHTING AND SECONDARY POWER SUPPLY**

1	<i>ABN/IBN location, characteristics and hours of operation</i>	NIL
2	<i>LDI location and lighting / Anemometer location and lighting</i>	NIL
3	<i>TWY edge and centre line lights</i>	NIL
4	<i>Secondary power supply/switch-over time</i>	(01) one power generator/ 05 Minutes.
5	<i>Remarks</i>	NIL

**DATG AD 2.16 HELICOPTER LANDING AERA**

1	<i>Coordinates TLOF or THR of FATO Geoid undulation</i>	NIL
2	<i>TLOF and/or FATO elevation (M/FT)</i>	NIL
3	<i>TLOF and FATO area dimensions, surface, strength, marking</i>	NIL
4	<i>True bearings of FATO</i>	NIL
5	<i>Declared distance available</i>	NIL
6	<i>APP and FATO lighting</i>	NIL
7	<i>Remarks</i>	NIL

**DATG AD 2.17 ATS AIRSPACE**

1	<i>Designation and lateral limits</i>	CTR In Guezzam Circle of 10 NM radius centered on the VOR IGZ.
2	<i>Vertical limits</i>	900M/GND
3	<i>Airspace classification</i>	D
4	<i>ATS unit call sign and language(s)</i>	IN GUEZZAM TWR/ Fr, En
5	<i>Transition altitude</i>	1300M
6	<i>Remarks</i>	NIL

**DATG AD 2.18 ATS COMMUNICATION FACILITIES**

<i>Service designation</i>	<i>Call sign</i>	<i>Channel</i>	<i>Hours of operation</i>	<i>Remarks</i>
1	2	3	4	5
TWR	IN GUEZZAM TWR	118.1 Mhz	0700/1500	NIL

**DATG AD 2.19 RADIO NAVIGATION AND LANDING AIDS**

<i>Type of aid, MAG VAR, Type of supported OPS (For VOR/ILS/MLS, give declination)</i>	<i>ID</i>	<i>Frequency</i>	<i>Hours of operation</i>	<i>Position of transmitting antenna coordinates</i>	<i>Elevation of DME Transmitting antenna</i>	<i>Remarks</i>
1	2	3	4	5	6	7
VOR (0°E 2017)	IGZ	113.4	H24	19°33'49"N 005°44'02"E	NIL	
NDB	IGZ	435	H24	19°33'53.84"N 005°45'08.96"E	NIL	

**DATG AD 2.20 LOCAL AERODROME REGULATIONS: NIL**

**DATG AD 2.21 NOISE ABATEMENT PROCEDURES: NIL**

**DATG AD 2.22 FLIGHTS PROCEDURES:**

- Aerodrome located in desert zone.
- For any flight to this aerodrome a notice of departure will be sent before 16h00 to DATGYDYD and Algiers ACC.

**DATG AD 2.23 ADDITIONAL INFORMATION:**

- Presence of birds and animals in the aerodrome.
- Mandatory turn around on the RWY turn pad.

**DATG AD 2.24 CHARTS RELATED TO AN AERODROME:**

AD –ICAO	AD 2 DATG-AD
AOC - ICAO RWY 08	AD2 DATG-AOC1
AOC - ICAO RWY 26	AD2 DATG-AOC2
IAC - ICAO VOR RWY 08 CAT A/B	AD2 DATG-IAC1
<b>IAC - ICAO NDB RWY 08 CAT A/B</b>	<b>AD2 DATG-IAC2</b>
VAC- ICAO	AD2 DATG-VAC1

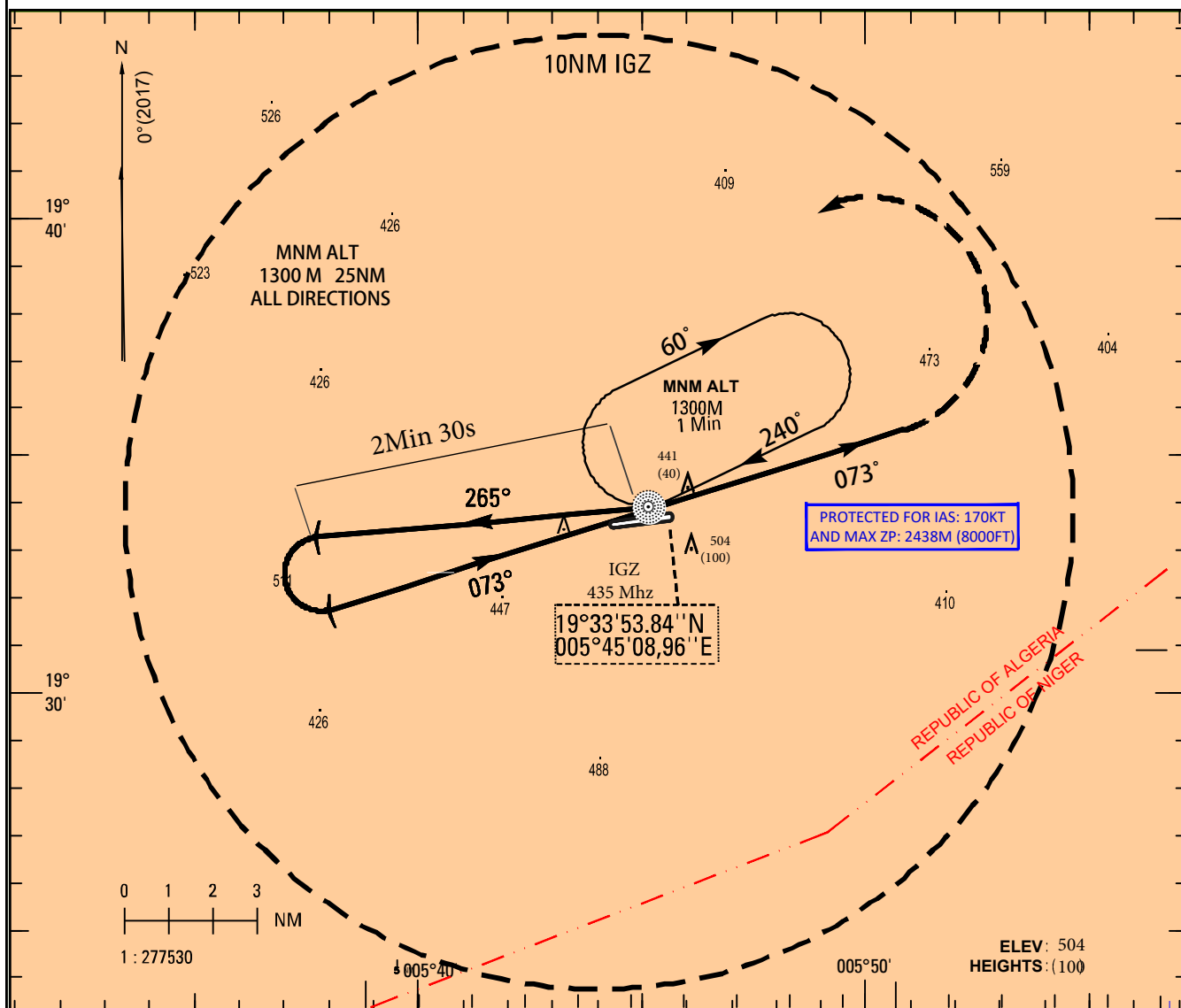
**INSTRUMENT APPROACH  
CHART CAT: A/B  
AD ELEV: 404 M**

**IN GUEZZAM-DATG  
NDB RWY 08**

ELEV, ALT IN METERS  
DIST IN NM  
BRG ARE MAG

TWR: 118.1

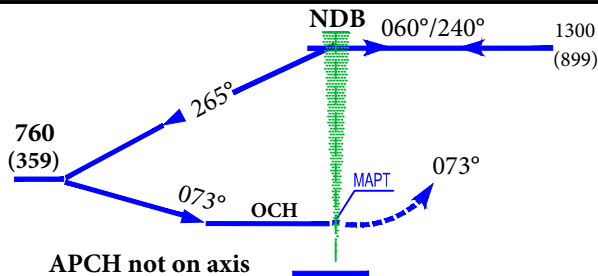
HEIGHTS RELATED TO  
THR 08 ALT: 401M



TA:1300M

**MISSED APCH:**

Climb following QDR 073° IGZ towards 850M QNH then turn left to join NDB IGZ climbing towards the Safety Altitude and follow the control instructions.



C A T	NDB RWY 08			CIRCLING		
	OCH	MDH	RVR	OCH	MDH	VIS
A	190 m	625 ft	1500 m	190 m	625 ft	1500m
B						

NOTE:

