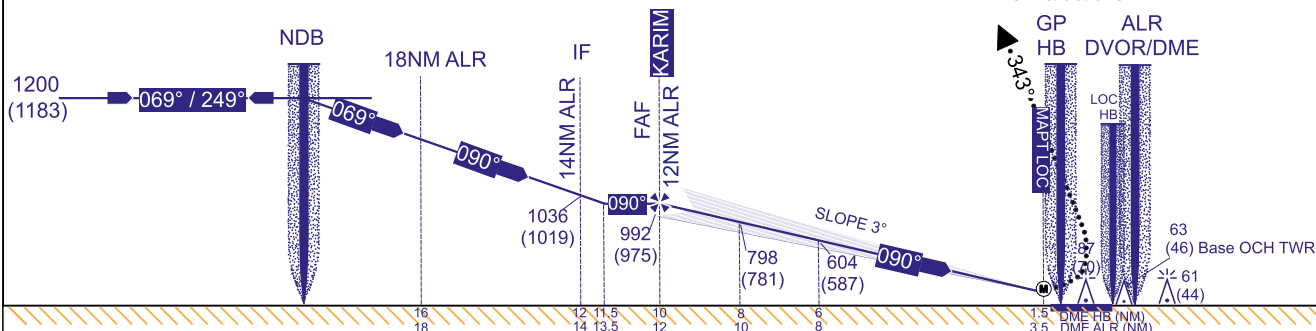


ALGIERS/
Houari Boumediene
ILS or LOC or NDB-VOR/DME- RWY 09
CAT A/B/C/D
RDH 16 m



3 10 E MISSED APPROACH

Turn left as possible to climb following radial 343° ALR to 930M QNH and follow ATC instructions.



	ILS RWY 09			LOC RWY 09			NDB-DVOR-DME-RWY 09			CIRCLING IN NORTH		
ACFT-CAT	OCH	DH	RVR	OCH	MDH	RVR	OCH	MDH	RVR	OCH	MDH	VIS
A	60M	200FT	750M	150M	500FT	1500M	150M	500FT	2300M	170M	560FT	2500M
B	63M	210FT	750M	150M	500FT	1500M	150M	500FT	2300M	190M	630FT	2900M
C	66M	220FT	800M	150M	500FT	1800M	150M	500FT	2400M	390M	1280FT	5000M
D	69M	230FT	800M	150M	500FT	1800M	150M	500FT	2400M	390M	1280FT	5000M